

TASKalfa 

> PRINT > COPY > SCAN > FAX

**TASKalfa 5501i/4501i/
3501i**

MONO MULTIFUNCTIONALS

RELIABLE ALL
ROUNDERS FOR
A **BUSY** OFFICE



 **KYOCERA**
Document Solutions

SHAPING THE FUTURE OF DOCUMENT SOLUTIONS TODAY.

Designed for businesses of all sizes, TASKalfa defines multifunctional devices in a whole new way, delivering the power, performance, quality and ultra-reliability that your business demands. So whether you print, scan, copy or fax – this series will become an essential partner to your business.

Engineered for the critical demands of any business, each TASKalfa multifunction device (MFD) features a sleek design on the outside with advanced imaging technology on the inside. The powerful combination of fast output speeds, Kyocera's unique long life technology, solution integration capabilities,

and consistent high-image quality engineered into each TASKalfa MFD assures superior document imaging every time. That's TASKalfa's number one priority.

Integrating with KYOCERA Mobile Print technology for printing from and scanning to smartphones and tablets, as well as major third party solution partners for advanced cost recovery & security, document workflow, and advanced output management, the TASKalfa mono MFD series meets your day to day needs, every day.

TASKalfa 5501i
55ppm mono

TASKalfa 4501i
45ppm mono

TASKalfa 3501i
35ppm mono





ECO FRIENDLINESS.



Kyocera is an environmentally-concerned global organisation who rigorously follow the principles of the three R's – reduce, reuse and recycle. The importance of having respect for and conserving our environment has been etched in Kyocera's ethos from inception. Our worldwide green policies encourage conservation and recycling, along with the development of products and technologies that can actually minimise the impact on the environment. For example, our use of eco-friendly materials extends to our packaging, which is foam free, and is constructed from biodegradable cardboard. The inks are produced from vegetable and soy dyes and have absolutely no impact whatsoever on the environment, when recycled.

The standard long-life components from Kyocera delivers up to 600,000 pages for the first preventative maintenance

yield which increases your business productivity by having a multifunctional product that is operational.

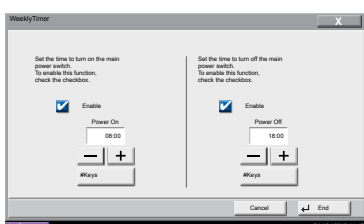
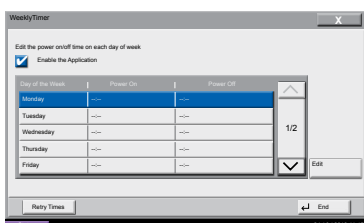
The TASKalfa multifunctional products offer one of the lowest Typical Electricity Consumption (TEC) in the market and represents up to a 50% decrease from the previous typical generation of mono multifunctional products which could save your business electricity costs. In addition, the TASKalfa MFDs offer deep sleep mode which consumes less than 2 watts of electricity, potentially adding to your savings. Also, to help minimise your environmental footprint by reducing your paper usage, the 'blank page skip' feature will not copy a blank page from your pile of documents.



SUPERIOR USABILITY THAT INCREASES YOUR PRODUCTIVITY.

WEEKLY TIMER

Weekly Timer allows you to store machine on/off times for each day of the week and set the machine to automatically turn on and off at those times, saving both energy and money. These devices do not depend on your staff remembering to switch them off. Weekly Timer is installed on the machine as a standard application.



INNOVATIVE TECHNOLOGY

The user-friendly colour touch screen control panel provides robust document handling and ease of use at your fingertips. Newly designed to incorporate the 'Home screen' with the push of a button, this control panel allows easy swipe with your fingertips like you would a smartphone or tablet.

Customised pre-set shortcuts for up to 50 unique workflows and the commonality of this colour touch screen control panel, to the TASKalfa 5501i/4501i/3501i, lets you get on with your work even faster.



ADVANCED USB INTERFACE

Be in control of your documents on the go. Conveniently print-from, and scan-to, any USB drive right from the touch screen control panel in PDF, JPEG, TIFF and XPS file formats.



ADVANCED SOLUTIONS.

HyPAS™

Businesses today are challenged with reducing output costs whilst maximising office productivity. Kyocera's open software development platform allows you to integrate the device into your existing business workflow in exactly the way you need it. Hybrid Platform for Advanced Solutions (HyPAS) transforms the device into a business tool that goes beyond the traditional functions of any normal device. These MFDs can be uniquely configured to interface with specific business applications like your document management system (DMS) or your inventory warehouse system directly from the control panel.



ADVANCED & SECURE NETWORK SCANNING & PRINTING.

The TASKalfa series is equipped with a standard network interface compatible with network protocols such as TCP/IP (IPv4), TCP/IP (IPv6), IPX/SPX, NetBEUI, IPSec, and AppleTalk. It enables network printing on Windows, MAC, UNIX, NetWare and other platforms. These devices enable printing from different paper sizes from the paper cassettes as well as tab paper printing for organisation of your important documents.

Whether you're scanning to your PC, FTP site, document box, USB device, or email, the TASKalfa series ensures secure scanning supporting SMTP over SSL for your peace of mind.

These devices also support the latest WEB protocols in order to send and receive from mail accounts such as Gmail and Hotmail.

At the control panel the high compression setting dramatically reduces the file size of your document, whilst you can opt to enable file size scanning to determine the size of your scanned files prior to sending to your email, thus ensuring you meet your company's IT size restrictions over the network. For PDF archival, the TASKalfa series also features PDF/A scanning to ensure you meet PDF archival ISO regulations within your company.

ADVANCED FUNCTIONALITY.

The TASKalfa Series is extremely productive, offering fast scanning and finishing speeds, matched to high-capacity finishing options and high-volume paper feeders, designed to exactly suit your specific requirements. Save time and reduce paper waste by printing on both sides with the standard duplex

unit, or by scanning your documents and sending them as digital files in to your workflow. Choose from a number of paper feeders to suit different papers and formats, for fast continuous printing and high volume operations.

PROFESSIONAL 7-BIN MAILBOX

The 7-bin mailbox sorter allows for faster and more efficient organisation of print outs for your business office.

ROBUST 4,000 SHEET FINISHER

This robust finisher supports multi-position stapling and a variety of paper weights. Options include 2/4 hole punch, 7 bin mailbox and booklet folding for all your advanced finishing needs.

ON BOARD DOCUMENT STORAGE

Create a simple way for you to store, secure and access critical documents at the device through TASKalfa's unique on-board Document box.

PROFESSIONAL BOOKLET FOLDING

Fold, tri-fold and saddle stitch booklets, up to 16 individual sheets from A4 to A3, for that professional touch in-house.

FAST DUAL SCAN DOCUMENT PROCESSOR

At less than one second per page, its dual scan capability dramatically improves your productivity and handles mixed originals with ease for a powerful scanning solution in both full colour and black & white.

WIDE 8.5" COLOUR TOUCH SCREEN CONTROL PANEL

The user-friendly colour touch screen control panel provides robust document handling and ease of use at your fingertips.

ADVANCED USB HOST INTERFACE

Conveniently print-from, and scan-to, any USB drive right from the touch screen control panel in PDF, JPEG, TIFF and XPS file formats.

VERSATILE MULTI-PURPOSE TRAY

A standard 150 sheet multi-purpose paper tray can handle mixed media types and up to 300g/m² for your special jobs such as banner printing. Optional Banner Guide allows for up to 10 banner sheets.

FLEXIBLE PAPER HANDLING

An innovative paper path design allows for a variety of paper weights through the trays, giving you the flexibility to satisfy virtually all your print and copy needs.



OPTIONAL 1,000 SHEET FINISHER

- > Multi-Position Staple
- > Optional 2 and 4 hole punch unit
- > 60-300 g/m²



OPTIONAL 4,000 SHEET FINISHER

- > Multi-Position Staple
- > Optional 2 and 4 hole punch unit
- > Optional 7-bin mailbox
- > 60-300 g/m²



TWO DOCUMENT PROCESSOR OPTIONS

- > 175 Sheet Dual Scan Document Processor with scan speeds up to 160ipm (dual scan)
- > 100 Sheet reversing Automatic Document Processor with scan speeds up to 75 images per minute



OPTIONAL BOOKLET FOLDER FOR 4,000 SHEET FINISHER

- > Folding up to 16 Sheets
- > Tri-Fold
- > Saddle Stitch
- > A4 to A3 Sized Sheets
- > 60 - 256 g/m²



THREE PAPER FEEDER OPTIONS

- > Dual 500 sheet trays
- > 3,000 sheet large capacity tray
- > 3,000 sheet large capacity tray (side deck)



OPTIONAL 7-BIN MAILBOX

- > Up to 7 output bins
- > 7 bins x 100 sheets A4; OR
- > 50 sheets A3/B4
- > 60-163 gsm

ADVANCED FUNCTIONALITY.

STAPLING UP TO 3 POSITIONS



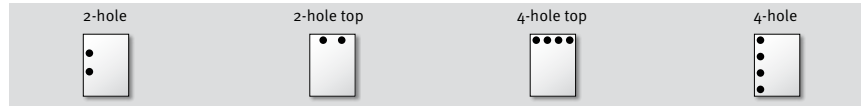
DF-770 FOR
UP TO 1,000
SHEET FINISHING

Stapling up to 50 sheets
A4 or 30 sheets A3 at 3
positions

DF-790 FOR
UP TO 4,000
SHEET FINISHING

Stapling up to 65 sheets
A4 or 30 sheets A3 at 3
positions. Also includes
walk up stapling

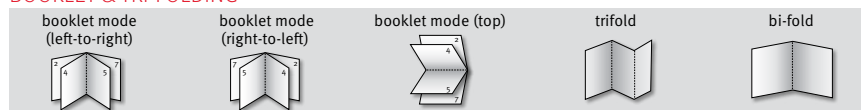
HOLE PUNCH



Requires PH-7C

Requires PH-7C

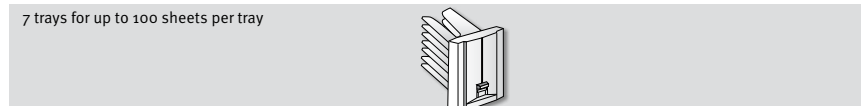
BOOKLET & TRI-FOLDING



Available on the
DF-790 with BF-730
attached

Requires BF-730

7-BIN MAILBOX TRAY



Available on the
DF-790 with MT-730
attached

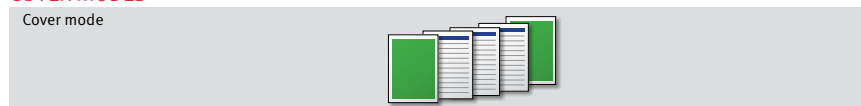
Requires MT-730

BANNER PRINTING



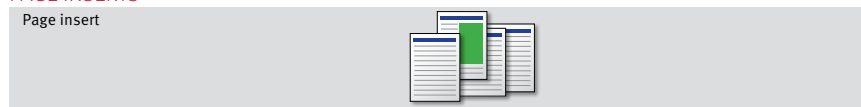
Banner guide optional connector available
to set up to 10 banner sheets

COVER MODES



Add a cover to your print or finished copies. You can
print/copy the first page and/or the last page on to
coloured paper or thick paper fed from different paper
sources.

PAGE INSERTS



Insert different colour or type of media between a set
number of pages to differentiate your prints and copies.

TAB PRINTING



Tab Printing feature allows users to divide certain
sections of a document by inserting index tab dividers.

Most of the optional accessories on the TASKalfa Series are common across the entire range. So if you want to utilise your assets by mixing and matching accessories as your business requires, then the TASKalfa Series is perfect for you. Select from two document processors and two different finishers, including one modular finisher with optional booklet unit and

7-bin mailbox for even faster and more efficient organisation of printouts. Additional paper cassettes can give these fast TASKalfa multifunctional devices a paper supply of up to 7,150 sheets, for hours of non-stop printing. No matter how your office carries out its document management, you can do it better with a Kyocera TASKalfa MFD.

GENERAL

Technology: Kyocera Laser Mono MFD, HyPAS solution platform

Engine speed:

TASKalfa 5501i: Up to 55/27 ppm A4/A3

TASKalfa 4501i: Up to 45/22 ppm A4/A3

TASKalfa 3501i: Up to 35/17 ppm A4/A3

Resolution: 600 x 600 dpi, Multi-bit technology for print quality of 9,600 dpi equivalent x 600 dpi

Warm-up time: Approx. 23 seconds or less

Time to first page:

TASKalfa 5501i: Approx. 3.2 sec. or less

TASKalfa 4501i: Approx. 3.8 sec. or less

TASKalfa 3501i: Approx. 4.7 sec. or less

CPU: Freescale QorIQ P1022 (Dual Core) 800MHz

Memory (std/max): 2 GB RAM + 160 GB HDD

Max memory increased to 2.5GB when DP-772 installed

Standard interface: USB 2.0 (Hi-Speed), USB Host 2.0, Fast Ethernet 10Base-T/100BaseTX/1000BaseT, slot for optional print server, slot for optional SD-Card, slot for optional Fax Systems

Dimensions (W x D x H): Main unit 648 x 767 x 747 mm

Weight: Main unit approx. 86 kg

Power source: AC 220 V – 240 V, 50/60 Hz

Power consumption:

TASKalfa 5501i: Printing/Copying: 890W

Sleep mode: 8.5W, Energy save mode 1.8W

TASKalfa 4501i: Printing/Copying: 780W

Sleep mode: 8.5W, Energy save mode 1.8W

TASKalfa 3501i: Printing/Copying: 660W

Sleep mode: 8.4W, Energy save mode 1.8W

Safety standards: GS / TÜV / CE. This unit is manufactured according to ISO 9001 quality standard and ISO 14001 environmental standard. Reduction of Hazardous Substances (RoHS) compliant.

For Australia & New Zealand: AS/NZS3260, C-Tick, A-Tick / Telepermit, International Energy Star Program.

PAPER HANDLING

All paper capacities quoted are based on 80gsm paper, thickness of max 0.11mm. Please use paper recommended by Kyocera under normal environmental conditions.

Input capacity: 150-sheet multi-purpose tray*, 60–300 gsm (banner 136-163 gsm), A6R-305 x 457 mm, tab paper (136 -256gsm), Banner max. 305 x 1,220 mm; 2 x 500-sheet universal paper cassette, 60-220 gsm, 140 x 182-305 x 457 mm

** 150 sheets A4 or smaller, 50 sheets above A4

Max input capacity with options (80 gsm): 7,150 sheets

Duplex unit:

Duplex as standard supports A5R-305 x 457 mm, 60–256 gsm

Standard output capacity:

250 sheets face-down, max. output capacity 350 sheets

PRINT FUNCTIONS

Controller language: PRESCRIBE IIc

Emulations: PCL 6 (PCL5c / PCLXL), KPDL3 (Postscript 3 compatible), XPS Direct print, PDF Direct print

Operating systems: All current Windows operating systems, Mac OS X Version 10.4 or higher, UNIX, LINUX, as well as other operating systems on request

Fonts/barcodes: 93 outline fonts (PCL), 136 fonts (KPDL3), 8 fonts (Windows Vista), 1 Bitmap font, 45 types of one dimensional barcodes plus two-dimensional barcode (PDF-417)

Print features: Encrypted PDF Direct Print, IPP printing, e-mail printing, WSD print, secure printing via SSL, IPsec, SNMPv3, quick copy, proof and hold, private print, job storage and job management functionality

KYOCERA Mobile Print®: KYOCERA Mobile Print supported devices. Application available to download from the iOS App store and Google Play

Cost recovery & security: Compatible with all major third party integration software. Compatible with most web print applications

COPY FUNCTIONS

Max. original size: A3

Continuous copying: 1-999

Zoom range: 25 - 400 % in 1% steps

Preset magnification ratios: 5 Reductions/5 Enlargements (5R/5E)

Digital copy features: Scan-once-copy-many, electronic sort, 2in1 and 4in1 function, image repeat copy, page numbering, cover mode, booklet copy, interrupt copy, form overlay, stamp function and skip blank page function

Exposure mode: Auto, manual: 7 or 13 steps

Image adjustments: Text, Photo, Text + Photo, Graphic/Map

SCAN FUNCTIONS

Functionality: Scan-to-Email, Scan-to-FTP, Scan-to-SMB, Scan-to-USB Host, Scan-to-box, Network TWAIN, WSD scan

Scan speed:

160 images per minute in mono

80 images per minute in colour

(A4, 300 dpi with DP-772)

Scan resolution: 600 dpi, 400 dpi, 300 dpi, 200 dpi, 200x100 dpi, 200x400 dpi, (256 greyscales)

Max. scan size: A3

Original recognition: Text, Photo, Text + Photo, optimised for OCR

Network protocol: TCP /IP

File types: PDF (high compressive, encrypted, PDF/A), Searchable PDF (option), JPEG, TIFF, XPS

FAX FUNCTIONS (optional)

Compatibility: ITU-T Super G3

Modem speed: Max. 33.6 kbps

Transmission speed: Max. 3 seconds (JBIG)

Scanning density: Normal: 200 x 100 dpi, Fine: 200 x 200 dpi, Superfine: 200 x 400 dpi, Ultrafine: 400 x 400 dpi

Max. original size: A3

Compression method: JBIG, MMR, MR, MH

Memory: Standard 12 MB, max. 120 MB

Features: Opt. Internet-fax, network faxing, rotate transmission, rotate reception, duplex fax reception, memory reception, mailbox, remote diagnostics, dual fax with second fax system

CONSUMABLES

Black toner kit: TK-6309; Micro-Particle toner black for 35,000 pages measured at 6% A4 coverage

Preventative maintenance yield: 600,000 pages

Waste toner bottle: WT-860; 100,000 pages

Staple cartridges: SH-10 for optional DF-770 & BF-730; 3 x 5,000 staples per box SH-12 for optional DF-790; 3 x 5,000 staples per box

OPTIONS

Fax unit: FAX SYS W

Internet fax kit: Internet Fax Kit (A) Licence

Document processors :

DP-770 (reverse automatic document processors) - 100 sheets, 45–160 gsm, A5R-A3, folio.

DP-772 (dual scan document processor) - 175 sheets; 35–220 gsm (simplex), 50–220 gsm (duplex); A6R-A3, folio.

Only one document processor can be used at the same time

Paper feeders:

PF-730: 2 x 500 sheets, 64-256 gsm, A5R-304.8 x 457.2 mm, folio

PF-740: 2 x 1,500 sheets, 60–256 gsm, A4, B5, letter

PF-770 (A4 side deck); 3,000 sheets, 60–300 gsm, A4, B5

Document Finishing:

DF-790 + attachment kit AK-731: Main tray: 4,000 sheets A4 (3,000 sheets with attachment BF-730); 60–300 gsm; B5R-304.8 x 457.2 mm Sub tray: 200 sheets A4; 60–300 gsm; A6R-A3 Sub tray (top) 100 sheets; 60–300 gsm; A6R-A4 Stapling up to 65 sheets A4 or 30 sheets A3 at 3 positions, B5-304.8 x 457.2 mm. Walk up stapling available for up to 3 positions.

DF-770 + attachment kit AK-731: Main tray: 1,000 sheets A4, 60–300 gsm, B5E-A3, Stapling up to 50 sheets A4 or 30 sheets at 3 positions, A3 Sub tray: 100 sheets A4, 60–300 gsm, A4-A6R

PH-7C Hole punch unit for DF-790/DF-770; 2-hole/4-hole 60–300 gsm, A5R-A3

MT-730 Mailbox sorter for DF-790; 7 bins x 100 sheets A4, 50 sheets A3/B4, 60–163 gsm

BF-730 Booklet and tri-folding unit for DF-790; Max. 64 pages (16 sheets) booklet folding and stapling 60–256 gsm, A3, B4, A4R Booklet mode; 60-90gsm : 16sheets, 91-105gsm : 13sheets, 106gsm or more : 1 sheet Cover sheet 60–220 gsm (simplex). Folding 60-90gsm : 5 sheets, (Non-staple) 91-105gsm : 3 sheets, 106gsm or more : 1 sheet Tri-folding: 60–105 gsm, multi tri-folding: 5 sheets (60–90gsm), 3 sheets (91–105 gsm)

DT-730; Document tray for easy handling of paper

Job separators:

JS-730 Job separator; 30-sheet internal job separator, 60–256 gsm, A5R-A3

JS-731 Job separator; 70-sheet external job separator, 60–256 gsm, A5R-A3

JS-732 Job separator; 100 sheet internal separator, 60-256gsm,A5R-A3. Either JS-730 or JS-732 can be fitted at the same time

Banner guide: Banner Guide; up to 10 x banner sheets (136 gsm)

Security:

Data security kit (E); ISO 15408 (Common Criteria) with security level EAL 3

Printed Document Guard Kit (B); Protection from unauthorised copies of documents

Card Authentication Kit (CAK); CAK Licence to enable USB card readers for secure proximity card release

Other:

SD-Card; 1 slot for printing forms, fonts, logos, macro storage

Fax memory; MM-16-128: Image memory (120 MB)

Keyboard; USB Keyboard / Wireless Keyboard

Card Reader Holder; Allows USB card readers to be securely held and stored

Keyboard Holder; Allows USB keyboards to be securely held and stored

Platen Cover (E); Platen cover. Cannot be used in conjunction with DP-770 or DP-772

IB-50; Gigabit-Ethernet board 10BaseT/100BaseTX/1000BaseT

IB-51; Wireless Ethernet board

Cabinet; Metal cabinet

Scan Extension Licence; Scan to searchable PDF solution (embedded OCR)



HyPAS

KYOCERA Document Solutions Australia
Tel 13 KYOCERA (596 2372)
www.KyoceraDocumentSolutions.com.au

KYOCERA Document Solutions New Zealand Ltd*
Tel 0508 KYOCERA (596 2372)
www.KyoceraDocumentSolutions.co.nz

* KYOCERA Document Solutions New Zealand is the trading name of the New Zealand branch of KYOCERA Document Solutions Australia Pty Ltd a corporation incorporated in Australia.

Kyocera does not warrant that any specifications mentioned will be error-free. Specifications are subject to change without notice. Information is correct at time of going to press. All other brand and product names may be registered trademarks or trademarks of their respective holders and are hereby acknowledged.

KYOCERA Document Solutions Australia Pty. Ltd ABN 77 003 852 444